

easyview v9

Video Management Software

- V9 Plus VCA on all Channels
- Over 8000 Supported Cameras
- Unlimited Server Expansion
- Unlimited User Expansion
- Person Search Feature
- 1 Year SMA Included
- Backward Compatibility to Version 7
- Video Analytics
- Unlimited Channel Expansion
- Open Platform
- OnVif



Version 9.2 Update

Version 9.2 has been built to be backward compatible with older versions back to version 7, from the release of version 8 and V9 upgrading from version 7 would result in the loss of your retained video, this has now been addressed, meaning any installation which has version 7 or 8 can now be simply upgraded without the loss of video, which is a massive advantage when offering a sustainable upgrade path to our new versions.

V9 EasyView

Version 9 features a brand-new approach to licensing. V9 is structured in four VMS product models: Base, Pro, Enterprise and Enterprise Plus. Based on the number of cameras, servers and simultaneous users, you can choose the VMS solution your project requires.

Video Analytics

V9 Enterprise Plus offers not only an unlimited license but VCA included on all channels, you can run real 3D calibration set up within the VMS management software with this new development.

Person Search

This extremely important feature enables the EasyView software to record in high resolution and stream multi-screen images to the local monitors, the multi streaming enables a second or even third-stream resolution choices to the programmer meaning the load to the local monitor is reduced enabling more cameras on the server.

New Storage Software Architecture

The new storage mechanism meets and exceeds the scalability of today's CCTV demands. Its designed to allow an unlimited number of supported disk drives or any disk drive size in mind, and to allow a mix of different size drives or network storage. It also allows flexibly removal or adding drives to the storage subsystem. It can work with direct connected disks, RAID subsystems, local drives or network drives – NAS or SAN storage systems. It still supports the EasyView Secure Data Distribution – SDD – mechanism where video frames – or groups of pictures – written to different drives to reduce the loss of video material if individual disks fail.



V9 BASE

Make small businesses safe

Up to 20 connected cameras on a single server (stand alone) system and maximum 2 simultaneous users.

V9 PRO

Medium size projects

Up to 50 connected cameras per server, maximum 3 servers in one system with maximum 5 simultaneous users.

V9 ENTERPRISE

For projects in large installations

Up to 250 connected cameras per server, maximum 150 servers in one system with maximum 10 simultaneous users.

V9 ENTERPRISE PLUS

A deep vision data VMS

VCA on every channel up to 250 connected cameras per server, unlimited servers and unlimited simultaneous users.*

* Unlimited features are limited to your hardware capabilities.

Video Analytic Triggers

Icon	Name	Description
	Zones	Up to 40 can be set per channel to detect any activity either in an area or crossing a point of interest
	Object Tracker	This is the core analytics element that can track objects of interest
	Tamper Detection	Detects any changes in video such as loss, lighting, covered, moved
	Counting	Counting is an option to provide counters on screen for targets in a zone or crossing a line
	Counting Lines	Counting lines have a unique calibration tool to separate individual target and generate accurate counts
	3D Calibration	3D calibration is a tool to enable the scene to be calibrated to accurately establish the type of target, person, groups, vehicles, animals etc. regardless of the depth of the scene
	Speed Filter	Once calibrated, the speed filter can detect and show the speed of targets in a zone or crossing a line
	Appear Filter	Will detect an object or target that suddenly appears within a zone
	Disappear	Will detect an object or target that suddenly disappears within a zone
	Enter	Will detect an object or target that enters a zone
	Exit	Will detect an object or target that exits a zone
	Stopping	Detects when a target has either stopped or is moving within a zone for a predetermined time
	Dwell	Detects when a target has either stopped or is moving within a zone for a predetermined time
	Direction	A way of detection if a target turns or goes in a specific direction. Can be set through 360 degrees
	Tailgating	When more than one object or target goes through tripwire or zone within a set time
	Abandoned Object	An object within a zone has been left for a set time from the scene.
	Logical Rules	The ability to combine rules to create specific rules using "And" "Or" "Continuous" and "Previous"
	Color Filter	Can detect specified colors on people



Thermographic Camera Integration

There are several newly released IP cameras offering Thermographic sensing. These have already been integrated into EasyView VMS. The big benefit to integrating these into our VMS is that a remote operator can securely monitor several screening areas at once and react to an alarm generated by a subject that is over the permitted threshold. These subjects can then be singled for further testing before being allowed into any facility.



Physical Screening Process

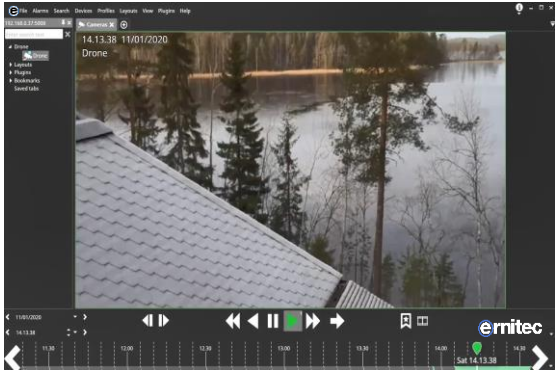
The integrated Thermographic cameras can be used as part of you physical screening process to gain enter to a building.

Applications



Drone Integration

We have managed to integrate the standard drone protocol used in most domes into EasyView. This new development opens up a host of applications for the VMS when combining alarms and drones to reduce cameras in hard to fit locations, or simply to run a guard tour round an empty warehouse at night.



Warehouse Patrol

Drones can be used to carry out guard patrols in warehouse environments.

Pipe Line Protection

Alarm sensors can be placed in the ground to active the drone on a pre set course to fly to the alarm zone.

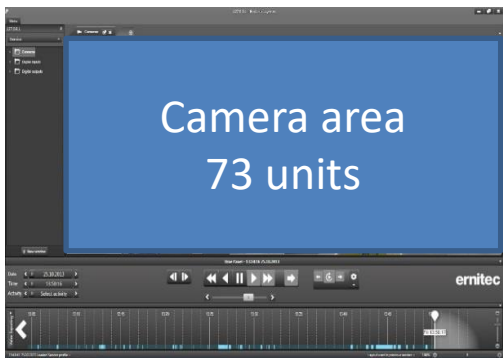


V9 EasyView Features

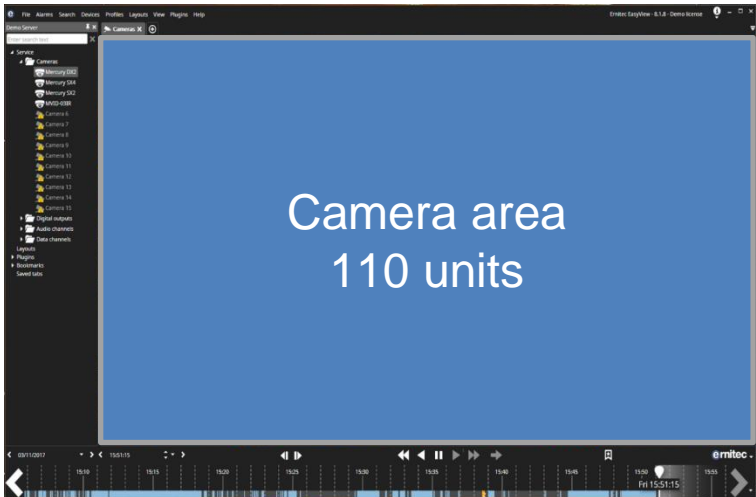
50% Larger Usable Camera Area

One of the changes to note is that without loss of functionality, there is a lot more available space for the key content for any VMS and that is Cameras. This has been made possible by eliminating wasted space by reducing the size and position of various user interface controls. Technically, there is now a 50% larger camera area with the same functions visible in version 7. Try it out and we know you'll love it!

V7



V9

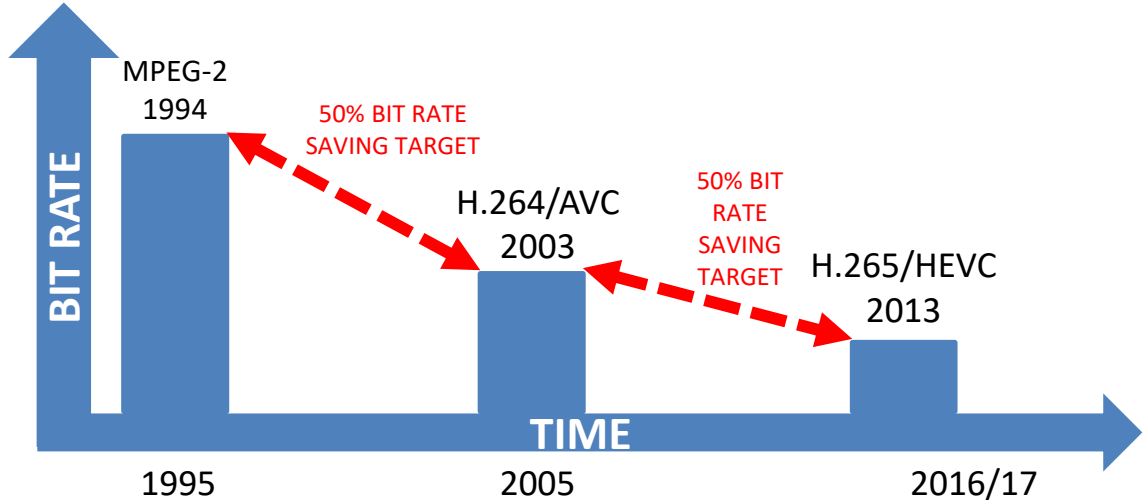


Support for the H.265 Video Format

V9 EasyView supports H265, so called “High Efficiency Video Coding” or HEVC video compression standard. For IP Video systems, it is the most likely successor to H.264, also known as AVC (Advanced Video Coding) or MPEG-4 Part 10. H.265/HEVC offers about double the data compression ratio at the same level of video image size and quality offering large savings on hard drive space requirements or substantially improved video quality at the same bit rate. H.265/HEVC supports resolutions up to 8192×4320, including 8K UHD (Ultra High-Definition).

Hardware Requirement Note:

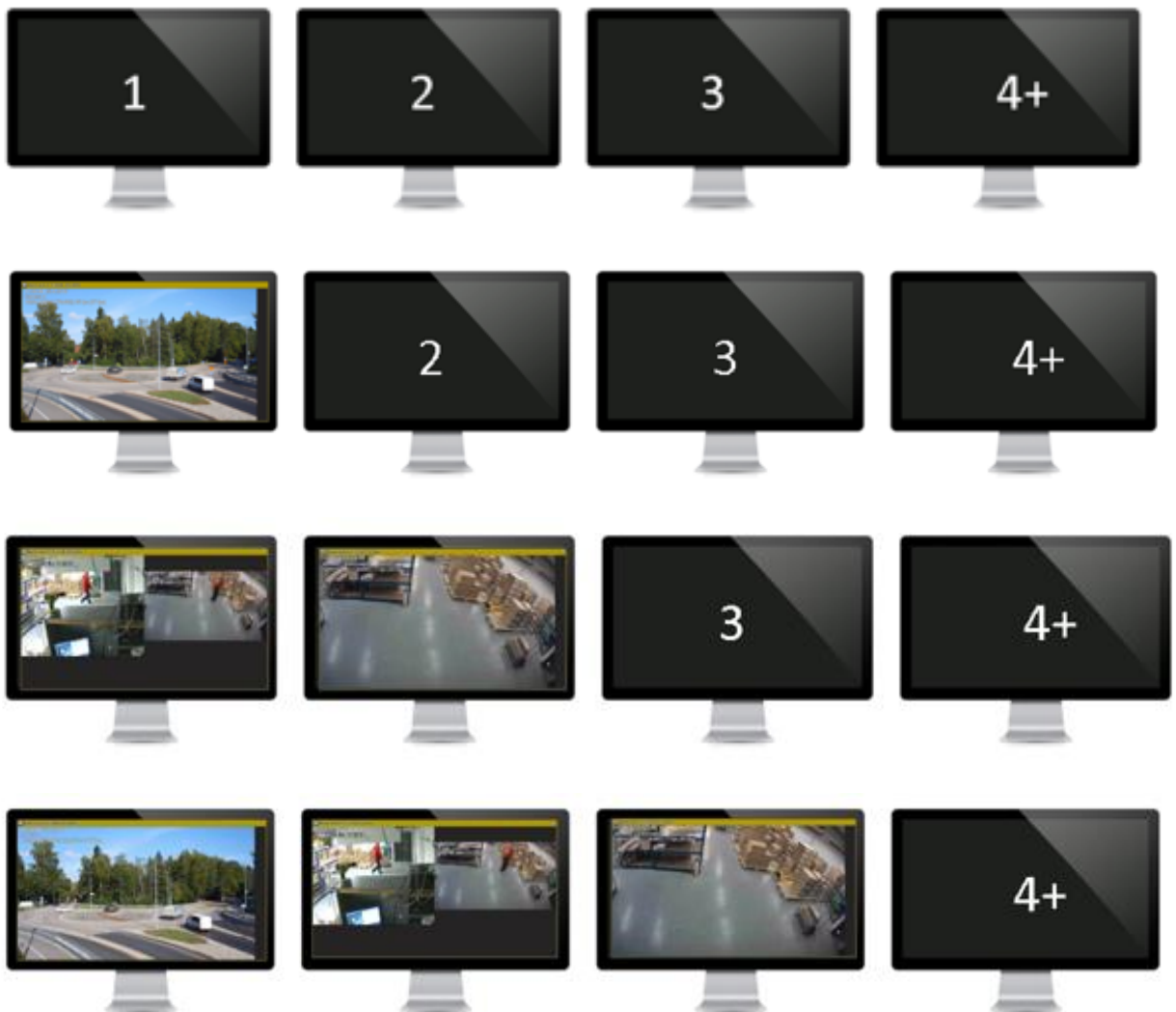
When using H.265/HEVC decoding more CPU power and/or accelerated graphics hardware/DSPs, Digital Signal Processors will be needed. H265 is more CPU intensive, which will affect how many simultaneous streams a workstation PC can decode. V9 EasyView H.265 support is separately licensed.



Multiple Alarm Monitors True Matrix Style

This scenario shows 4 alarm Monitors. When one alarm is active, it is displayed on the first alarm monitor. If there are two active alarms, then the first alarm is always displayed on the first monitor, and the newest alarm opens on the second monitor in a Que. Then, as can be expected, the third alarm opens on the third alarm monitor. When the first alarm is handled (user ends the alarm) it's then closed on the first monitor, and the remaining alarms shift to the left. In other words, what was the second alarm on the second monitor moves now to the first monitor as it is now the oldest alarm in the alarm stack.

Note: This scenario can also be set up on a quad grid on one monitor.



V9 EasyView Features

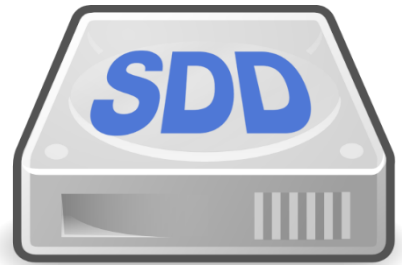
Powerful Multi-Streaming

With the power of multi streaming we have a world beating software offering viewing and recording all from the same software, we can offer full HD recording with HD streams for the local and remote clients and D1 resolution to you mobile device. Sensibly dividing the streaming between devices massively reduces the load on the system and give outstanding figures.



SDD Secure Data Distribution

The EasyView software can secure your video data using the unique SDD feature. The Ernitec SDD technology distributes video frames evenly between disks. Using 3 discs is optimum, meaning with single drive failure would thus only decrease the frames on a video clip and not leave any large blank areas during the storage interval. For forensic research a well-placed, good resolution camera gives practically the same success rate with a low frame rate as a video with a higher frame rate – meaning that the risk of not being able to analyse an event due to a failed hard disk becomes close to zero.



Huge Camera Integration List

EasyView can integrate with over 8000 camera with native SDK integration offering the full features of the cameras not just the normal OnVif





New High performance live data base

The new storage mechanism meets and exceeds the scalability of today's CCTV demands. Its designed to allow an unlimited number of supported disk drives or any disk drive size in mind, and to allow a mix of different size drives or network storage. It also allows flexibly removal or adding drives to the storage subsystem. It can work with direct connected disks, RAID subsystems, local drives or network drives – NAS or SAN storage systems. It still supports the EasyView Secure Data Distribution – SDD – mechanism where video frames – or groups of pictures – written to different drives to reduce the loss of video material if individual disks fail.



WARNING

Version 9 file system is **NOT** compatible with the V7.5 or earlier version of our storage system.

Upgrading a VMS Server to V9 means that existing materials will be lost. You must Export or Archive materials that need to be saved before upgrading, or keep the server at V7.5 or earlier.

If you have to keep the data, you could perform a "Rolling upgrade": Install new server or use new disks, switch over recording to the new server/disks, and keep the old ones (or just the old disks, for as long as the required retention period, and then reuse the hardware elsewhere)

Or you can keep using the old server with old version for as long as the machine works and only new servers use the new File System. It is also possible to continue using the old storage File System on V7.5 or earlier on the "slave" VMS Servers, and only upgrade the Master Server to V9 and install new servers with V9





Ernitec Video Analytics

iLids Approved Video Analytics

- Integrated into EasyView
- Trip Wire
- Tracking
- People Counting
- Tamper
- Dwell Filter
- Remove Object
- Speed Detection
- Smoke
- Fire

New Video Analytics Package

Version 9 incorporates the VCA set up directly in the system manager program, there is no need to run a separate program improving install times and enabling better back up of settings.

The Ernitec Video Analytics Package can be implemented either as a counting functionality or with full VCA functionality. It includes tempering detection mechanism to prevent camera vandalism. The easy to use graphical configuration tool for camera calibration and generating zones, lines and rules for VCA events.

The VCA functionality includes a full set of filters, such as entry/exits, dwell time, tripwire, speed detection, object detection and removal.

Located in the VCA you can select on a camera by camera basis the most appropriate analytics function to be used.

Counting Function

With the counting function you can set object counts based on object classification and movement direction, its also fully integrated with the EasyView video Management Solution.

This can be used with any given camera on the Ernitec EasyView Enterprise VMS, whether it be IP or Analog cameras.

You can create multiple counting zones on one camera overlay to suit what instances the camera view might incur.

Also with the counting function it can distinguish between objects whether it be a Bike, Car, Person etc... It is highly accurate with its built in self training analytics engine. You can also use the reporting tool for flow analytics and daily/weekly/monthly/yearly visitor statistics.

Embedded VCA Configuration Tool

The VCA configuration is now possible with in the system manager. You need a separate license for the VCA needs to be added at this stage to enable the features. The VCA license is included in the Enterprise V9 Plus License



Zones & Lines

The configuration screen is where you configure the zones and lines you need to use for different aspects of the VCA. You can add lots of different filters to each zone/line, such as direction filters, people dwelling, tripwires, object appeared/disappeared, speed tracking and many others.



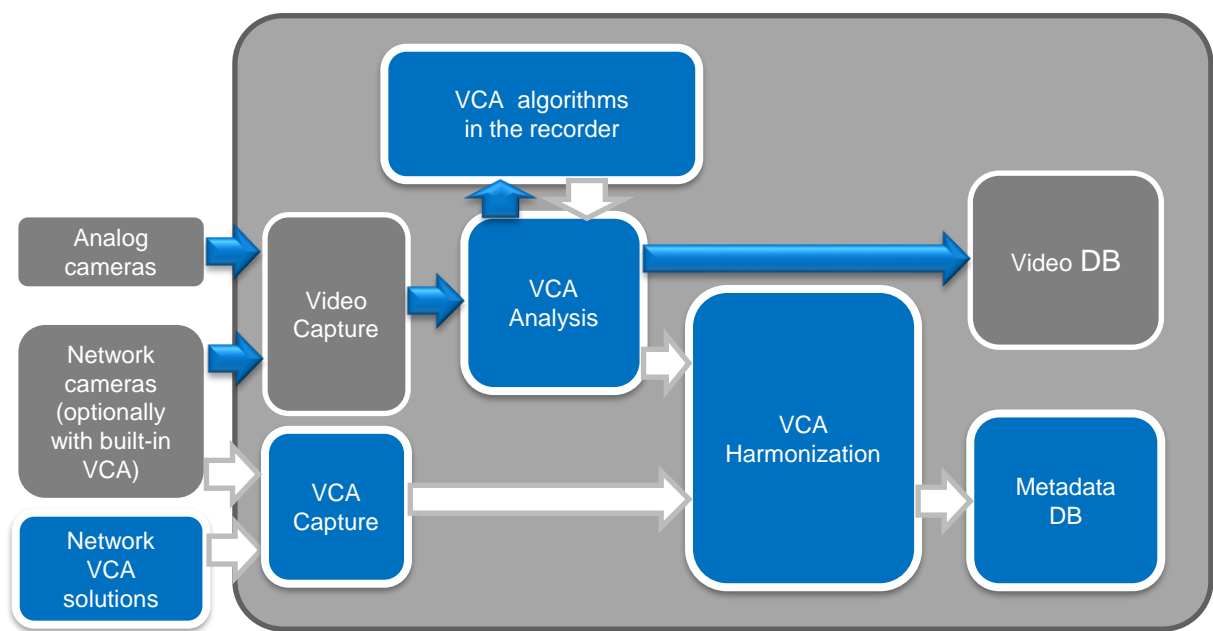
VCA Channel Configuration

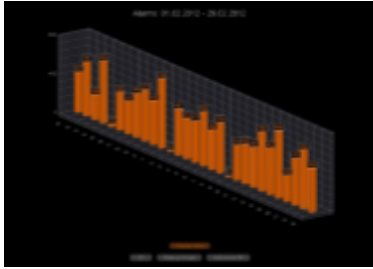
The VCA configuration screen is where you can set the camera up for use with VCA. For the VCA to work you need to add the angle of the camera and the height of the camera so it can work out the area in a 3D space, so this can determine whether the camera is looking at a car, person or other objects. When you get the next screen you need to configure the channel by using the image overlay (right). This is based on a 6ft human so you can obtain the right height and FOV for the camera (near and far).



Architecture

Ernitec Video Analytics platform consists of a set of interfaces and API's, allowing the analytics solution to be easily integrated to the EasyView VMS. Analytics meta-data, such as object coordinates and properties are captured through XML- configurable network interfaces. Once captured, the semantics of different meta-data languages is harmonised and the data is checked against alarm rules. Finally the data is stored into an open database for later search and retrieval.





Reporting Tool

Expansion to EasyView Video Management System

- Custom Reports
- Audit Trail
- Alarms & Events
- Bookmarks
- Centralised Database
- Any Web Browser

Features

Create custom reports based on Ernitec Video Analytics & ANPR software. Events including people counting, dwell times and number plate statistics.

Audit trail reports for system and user insights, web based tool for designing 2D/3D graphical reports with easy to use pre-configured and customised reports are saved as bookmarks.

Report Configuration

Setup restricted access for specific end users. The reports can be exported in different formats .doc, .xls, .ppt or list format. The audit trail reports to give a system overview. User reports for access and action. Pre-configured reports to analyse and improve the system. Bookmarks for pre-configured reports

Alarm & Events

Storage

- Configured alarms and events are sorted in a Microsoft SQL express database
- Centralized database or installed directly on to the master recorder

Structure

Ernitec EasyView Reporting includes:

- Event Reporting Module
- Audit trail reporting module
- Bookmarks
- Set-up user management utilities
- Inbuilt web server
- SQL query engine
- Web based interface



EasyView VMS Heat Map

Identify Hotspots, Cold Zones and Bottlenecks in your space.

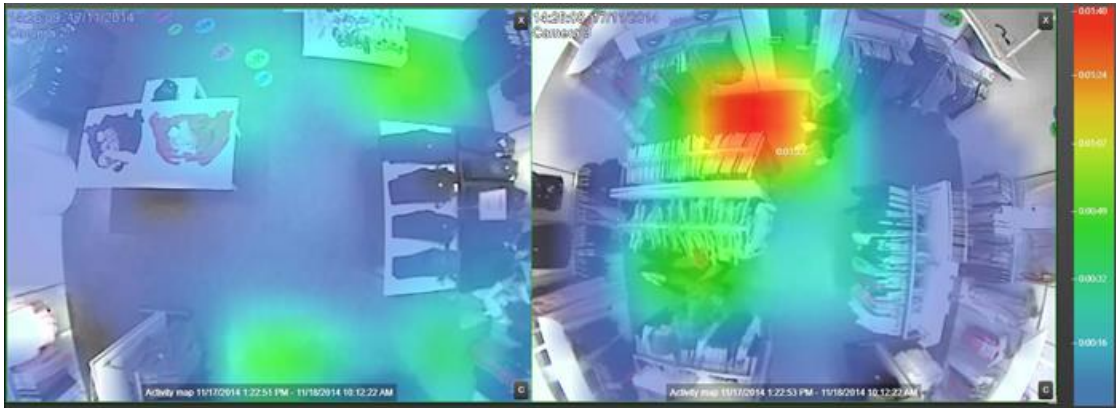
The EasyView VMS Activity Map plugin

This helps you to improve your store's performance. The Activity Map visualizes your store hotspots, bottlenecks and cold zones. You can focus in-store campaign efforts to places where people stop most often and measure if your campaign has a positive effect. You gain understanding where customers spend their time which helps you to design your store layout more effectively. When introducing a new product you can measure how much interest it receives over time. Activity Map is also a helpful tool for security personnel as they can see at glance if someone visited the area of interest during the past minutes.

Benefits Of Heat Mapping

- **Insightful** – Helps you to improve your store's performance based on analysis of customer movement patterns.
- **Visual** – Visualizes hotspots and cold zones with intuitive coloring.
- **Quantitative** – Sidebar and pointer tool shows the exact cumulative duration of activity at different places.
- **Comparisons** – Combined Activity Map makes it possible to do comparisons between different departments of the store. An Activity Map can be generated in realtime or historically from playback material. A snapshot of the Activity Map can be taken with a single click at any time.
- **Ease of use** – An Activity Map is generated for areas of interest and, for example, cashiers can be easily masked out on the fly.
- **Scalable** – Inherently scalable from one to an unlimited number of activity maps. An Activity Map is independent of camera models.

Activity Heat Map



Combined Activity Map

An Activity Map visualizes activity in the image over a certain period of time. Multiple cameras can be combined to form a single Activity Map allowing visual comparisons between different departments of the store. Areas with most activity are colored with red. The sidebar or the pointer tool on top of the Activity Map shows the exact duration of activity each color represents.

System Architecture

Activity Map cameras are selected in the VMS server containing SQL Server Express or Standard. Activity Maps can be then viewed with any client containing the Activity Map plugin. Activity Maps can be generated in realtime or historically using playback controllers. At any time snapshot images can be taken. With SQL Server Standard there is no upper limit for access to historical data. The SQL Server Express limits the amount of metadata to 10 GB corresponding roughly to two months of historical data with one Activity Map camera. If Activity Map is the only video content analytics (VCA) feature in use for the corresponding camera then the VMS server can be configured to store metadata for more than a year's activity.

System Requirements

- Windows 7, 8, 10, Svr12 or Svr16
- EasyView VMS Environment
- SQL Server Express or Standard



Ernitec EVR GO

App for iPad, iPhone iPod & Android

- Ease Of Use
- Clear Image Quality
- Single Tap To Send Screenshots
- One Login To Handle Up To 100 Servers
- Ability To Build In Demo Environment
- View Live Or Recorded Video From Any Camera

Ernitec EasyView GO app

This brings true mobility to video surveillance. It allows remote access to video surveillance footage via various mobile devices – such as phones, PDAs and hand-held tablets. Authorized personnel can use the Ernitec EVR GO app when roaming, whether that be on-site, or from elsewhere.

This supports situational awareness for first responders; provides security professionals with a more adaptable method for mobile monitoring; and much more

How To Get Started

You can download the Ernitec EVR-GO app easily to your Apple device via the Apple App Store. For Android devices, visit the Google Play Store.

Once downloaded, the app contains local demo video and a connection to the Ernitec EasyView server.

Supported Devices

Supports the latest Apple mobile devices & Android. All cameras supported by Ernitec EasyView VMS – Included ACTi, Axis, Bosch, Elmo, Ernitec, Hikvision, Iqeye, JVC, Motobix, Panasonic, Pelco, Pixord, Samsung, Sanyo, Sony, UDP, Vido and many more.

Connectivity

Supports Wlan and 3G networks, as available in the specific devices. Connection to the Ernitec Gateway through Ernitec EasyView Enterprise licences. From an Apple device to an Android all can be connected to the Ernitec EVR App.

Ernitec EVR Go App Features

View Real-time and Playback Video

Sites can be easily configured and directly accessed from Ernitec EVR GO.

Each site can include up to 128 cameras (per server) and unlimited Camera expansion. View live video from any camera attached to the system, IP or Analog. Zoom in to the streaming video easily.

Easy date/time searching for video footage . Still images can be sent via email as JPEG files. PTZ control: Manual control, Pre-set positions and camera tours. I/O control, such as doors and lights can be controlled via Ernitec EVR Go App, also receive triggered alarms via email.



Connectivity

Supports WLAN and 3G networks, as available in the specific devices. Connection to Ernitec EasyView Enterprise through the Gateway service. No further components need to be opened for internet/mobile connectivity. Setting user authentication based on username / password information to allow remote access authenticated users only.

Supported Devices

Supports iPhone, iPad, Ipad touch devices with iOS 3.X and 4.X operation systems. Ernitec VMS supports over 2000 native drivers for CCTV cameras. Any camera that is connected to the system through IP or Analog connection will be supported by the EVR GO App.

Download the Ernitec EVR GO App through Apple iTunes or Androids Google Play.

**ernitec**

Software Maintenance Agreement (SMA)



- Priority Support
- Free Major Upgrades
- Future Proof
- Reduced over all cost of ownership
- Fast Response
- Latest Drivers
- 1 Year SMA

Included FOC with new V9 License
Purchase

Updates

Keeping your new server healthy has become a major part of CCTV maintenance. Soon it will be a fact of life that you go into your CCTV server and make windows updates. In order to do this safely you would need to have the comfort that any update you made would not affect the VMS, with our SMA in place this would give you the peace of mind that you could up-date the VMS and camera firmware at the same time as updating windows.

Development

All software takes a lot of development time and lots of people with even more hours to complete the whole process. The Ernitec EasyView software is no different, we have over 50 engineers working on our software making the improvements to current versions, new camera drivers and exciting new features for the future.

Support

In recent years we have made immense improvements to our software and at the same time hardware has taken a gigantic leap forward enabling software to do more and more. Just think a couple of years ago would you have expected Microsoft to stop supporting XP? But this is the world we live in now where hardware and operating systems are changing at a dramatic rate.

SMA For Servers

It's for reasons like this that we have introduced our SMA concept, by adding SMA to your Ernitec VMS purchase you are safeguarding the future of your system. During the life time of your CCTV system we will be bringing out new major versions and if you have an SMA in place these new versions will be included in the support contract to you and they will be free of charge. You can set up an SMA for a single year and renew them each year or purchase several years all in one go. You can also tie our SMA into the maintenance agreement that you offer your customer.



Software

- **Software Upgrades:** all Ernitec EasyView new software versions are available at no extra cost for the life of your SMA contract.
- **License Modifications:** no charge when purchased for the service to carry out license modifications such as upgrades, extensions and change of hardware
- **Training:** On-line basic training on how to install, configure and manage Ernitec EasyView software and recorders with practical tips and a wealth of knowledge and experience to help both engineers and end-users get the most from their Ernitec EasyView solution
- **Support:** Direct and fast support is offered to all customers taking the software upgrade package. This includes assistance with those difficult configuration issues, support case prioritization and pre-installed remote system access software

Benefits

- **Future Proof:** Protect your investment and ensure that you and your customers have access to upgrade to the latest features and software versions when available free of charge .
- **Customer Satisfaction:** Ensure you are equipped to help your customers get the most from their new system and receive optimal support from your engineers with comprehensive and easy to understand product training.
- **Reduce Costs:** Ernitec commission the systems helps to reduce installation time.
- **Fast Response:** Ensure your engineers receive prompt and efficient support when they need it.





V9 EasyView SMA Terms & Conditions

- The Software Upgrade Packages can be ordered along with the EasyView VMS purchase or within 6 months from the date of the original Software license purchase. If no Software Upgrade Package is in place, any change to a new major version release will be charged at the full license price at the time of upgrade
- For license modification only the service cost to extend licenses are covered all additional licenses are subject to standard costs at the time of purchase
- Training is available upon customers request and is subject to availability.
- The package does not include or extend cover for any hardware components and applies only to Ernitec EasyView Manufactured Software.
- The SMA maintenance & support is priced per each channel per month (delivered in minimum 12-month periods for end-customers).
- SMA: Basic Maintenance & Support offers Software and driver updates + Ernitec Service Desk support
- The entire system must be covered by the SMA agreement (no partial agreements).
- When channels are added to the system (license), the agreement is expanded (and payment is due).
- Price and duration of the extension is, by default, matched to the original agreement duration (period).
- Optionally, when the license is expanded, the agreement can be extended with additional years.
- Upon extending an existing agreement, with the sale of a full additional year's extension, the system (license) expansion is free for the remaining duration of the original agreement.
- No software updates are possible without SMA!
- V9 EasyView SMA SMA Maintenance & Support, is priced in 1-month segments per channel per month, you can only purchase them in quantities of 12, 24, 36, 48, 60 months.
- New systems (licenses) the first year's (first 12-months from license generation) the basic SMA is free (included), if end user customer information is provided within 60 days from license creation via Ernitec support team.

System Maintenance Agreement

New systems (licenses) the first year's (first 12-months from license generation) the basic SMA is free (included), if end user customer information is provided within 60 days from license creation via Ernitec support team.



Ernitec Part No.	Description
V9 Licenses	
0063-90001	V9 EasyView 1 Ch Base License Max, Cams 20, Servers 1, Users 2; No Audio, No Text Data
0063-90005	V9 EasyView 1 Ch Professional License Max, Cams 50, Servers 3, Users 5; No Audio, No Text Data
0063-90009	V9 EasyView 1 Ch Enterprise License Max, Cams 250, Servers 150, Users 10, Audio & Text Data
0063-90013	V9 EasyView 1 Ch Ent Plus License Max, Cams 250, Unlimited Servers & Users, VCA, Audio & Text Data
0063-90017	V9 EasyView Base Upgrade V9 Base to V9 Professional
0063-90018	V9 EasyView Pro Upgrade V9 Pro to V9 Enterprise
0063-90019	V9 EasyView Ent Plus Upgrade V9 Ent to V9 Enterprise Plus
0063-90020	V9 EasyView Enterprise Upgrade V5,V6,V7 or V8 Ent to V9 Ent
0063-90021	V9 EasyView Pro Upgrade V9 Pro to V9 Enterprise
0063-90023	V9 EasyView 1 Ch Enterprise Failover License failover qty must match or exceed original server
0063-90026	V9 EasyView 1 Ch Enterprise parallel license parallel qty must match original server
0063-90029	V9 EasyView Video Wall Server License 1 Display Server (max. 4 monitors/DS)
0063-90030	V9 EasyView Video Wall Console License 1 Operator Console
0063-90031	V9/V8 Metadata Channel Enterprise Metadata Channel one per ANPR camera or device
0063-90032	V9/V8 1 Channel 1 Year SMA for 1 year per channel Service & Maintenance Agreement
0063-90033	V9/V8 1 Channel 3 Year SMA for 3 years per channel Service & Maintenance Agreement
0063-90034	License Modification Service Fee MAC change Etc
0063-90035	V9 EasyView 1 Ch Enterprise Plus Failover License failover qty must match or exceed original server
0063-90038	V9 EasyView 1 Ch Enterprise Plus Parallel license parallel qty must match original server
0063-90041	V9/V8 User Expansion 10 Ch simultaneous user expansion
0063-90042	V9/V8 User Expansion 50 Ch simultaneous user expansion
V8 Licenses	
0063-90201	V8 EasyView 1 Ch Enterprise License Max, Cams 250, Servers 150, Users 5, Audio & Text Data
0063-90206	V8 EasyView Pro Upgrade, V5,V6, V7 Pro to V8
0063-90207	V8 EasyView Enterprise Upgrade, V5,V6 or V7 Ent to V8 Ent
0063-90208	V8 EasyView VCA Advanced License Zones, lines, dwell, stop, speed threshold, colour
0063-90209	V8 EasyView 1 Ch Enterprise Failover License, failover qty must match original server
0063-90212	V8 EasyView 1 Parallel License, parallel qty must match original server
0063-90215	V8 EasyView Video Wall Server License 1 Display Server (max. 4 monitors/DS)
0063-90216	V8 EasyView Video Wall Console License 1 Operator Console
V7 Licenses	
0063-90301	V7 EasyView 1 Ch Professional License Max, Cams 50, Servers 1, Users 5; No Audio, No Text Data
0063-90305	V7 EasyView 1 Ch Enterprise License Max, Cams 128, Servers 5, Users 10, Audio & Text Data
0063-90309	V7 EasyView Pro Upgrade V7 Pro to V7 Enterprise
0063-90310	V7 EasyView Pro to Pro Upgrade V4,V5 or V6 Pro to V7 Pro
0063-90311	V7 EasyView Pro Upgrade V4,V5 or V6 Pro to V7 Ent
0063-90312	V7 EasyView Ent Upgrade V4,V5 or V6 Ent to V7 Ent
0063-90313	V7 EasyView 1 failover license failover qty must match original server
0063-90316	V7 EasyView 1 parallel license parallel qty must match original server

Connectors

0063-90101	V9 EasyView PRO Connect Anvia Surveillance Centre Connector for 1 server
0063-90102	V9 EasyView PRO Connector G4S Anvia Surveillance Centre Connector for 1 server
0063-90103	V9 EasyView PRO Connector ISS Anvia Surveillance Centre Connector for 1 server
0063-90104	V9 EasyView PRO Connector Sec Anvia Surveillance Centre Connector for 1 server
0063-90105	V9/V8 EasyView Connect Anvia Anvia Surveillance Centre Connector for 1 server
0063-90106	V9/V8 EasyView Connector G4S Anvia Surveillance Centre Connector for 1 server
0063-90107	V9/V8 EasyView Connector ISS Anvia Surveillance Centre Connector for 1 server
0063-90108	V9/V8 EasyView PRO Connector Anvia Surveillance Centre Connector for 1 server
0063-90109	V9/V8 EasyView Connector SOC Anvia Surveillance Centre Connector for 1 server
0063-90110	V9/V8 EasyView Connector Turva Turvakolmio connector for 1
0063-90111	V9/V8 EasyView Connector Esmikko Access Control system Connector for 1 server
0063-90112	V9/V8 EasyView Connector Hedengren system connector for 1
0063-90113	V9/V8 EasyView Connect Honeywell Galaxy access Control connector for 1
0063-90114	V9/V8 EasyView Connect Texecom access Control connector for 1
0063-90115	V9/V8 EasyView Connect Advancis Winguard connector for 1
0063-90116	V9/V8 EasyView Connect Stanley Unison Security connector for 1
0063-90117	V9/V8 EasyView Connector 2020imaging X-Ray System connector for 1
0063-90118	V9/V8 EasyView Connector ASAN Video Management connector for 1
0063-90119	V9/V8 EasyView Connector CISO Systems connector for 1
0063-90120	V9/V8 EasyView eConnect System connector for 1
0063-90121	V9/V8 EasyView Einstein Health System connector for 1
0063-90122	V9/V8 EasyView Connector EL.MO connector for 1
0063-90123	V9/V8 EasyView Connector Environics CBRN connector for 1
0063-90124	V9/V8 EasyView Conct Schneider ESchneider Electric ESMI connector for 1
0063-90125	V9/V8 EasyView Connector PSIM Fats Protect connector for 1
0063-90126	V9/V8 EasyView Flexposure Monitoring Centre connector for 1
0063-90127	V9/V8 EasyView Gamanert Monitoring Centre connector for 1
0063-90128	V9/V8 EasyView Ahedgren System connector for 1
0063-90129	V9/V8 EasyView ADT I-ViewNow Monitoring Cntr connector for 1
0063-90130	V9/V8 EasyView iComply connector for 1
0063-90131	V9/V8 EasyView ICT Protege GX Bld automatin connector for 1
0063-90132	V9/V8 EasyView iMatrix connector for 1
0063-90133	V9/V8 EasyView Initsys Control Center connector for 1
0063-90134	V9/V8 EasyView Ironyun connector for 1
0063-90135	V9/V8 EasyView Kroneman Autiomatic system connector for 1
0063-90136	V9/V8 EasyView Lenel OnGuard 7.0 connector for 1
0063-90137	V9/V8 EasyView KONE Megalock connector for 1
0063-90138	V9/V8 EasyView MEI Systems connector for 1
0063-90139	V9/V8 EasyView Open Options Access Control connector for 1
0063-90140	V9/V8 EasyView Elasoft GEMOS connector for 1
0063-90141	V9/V8 EasyView Prowis HUST connector for 1
0063-90142	V9/V8 EasyView Qognify PSIM connector for 1
0063-90143	V9/V8 EasyView Safe4 connector for 1
0063-90144	V9/V8 EasyView Trinity Pvt connector for 1
0063-90145	V9/V8 EasyView Viakoo connector for 1
0063-90146	V9/V8 EasyView WYS WebApp connector for 1
0063-90147	V9/V8 EasyView Wimax GEA Toll Management connector for 1
0063-90148	V9/V8 EasyView Wipro C4i connector for 1
0063-90149	V9/V8 EasyView 9solutions Cell Contact Unit connector for 1
0063-90150	V9/V8 EasyView Lundix SPC Bridge Vanderbilt connector for 1
0063-90151	V9/V8 EasyView Robin Radar Systems connector for 1
0063-90152	V9/V8 EasyView MAGOS Radar Systems connector for 1
0063-90153	V8/V9 Connector to Lenel (OnGuard v7.0) System V9/V8 connector for 1
0063-90154	V8/V9 Immix connector for 1 connector for 1
0063-90155	V8/V9 IP24 connector for 1 connector for 1
0063-90156	V8/V9 IP24 connector for 1 connector for 1
0063-90157	V8/V9 Sentinel Remote Alarm connector for 1
0063-90158	V8/V9 Paxton connector for 1