



Indoor Analog Mini Dome

Vega 5 IR

- 1.27 MP high-performance CMOS
- 2.8-12mm Vari-focal Lens
- 700 TVL
- WDR
- 30M IR Light
- OSD Menu
- Privacy Masking
- True Day/Night
- 2 year Warranty

New 1/3" CMOS Sensor

The 5th generation of Vega Series dome cameras incorporates a new CMOS image sensor offering excellent colour reproduction and low light sensitivity.

WDR

The Vega 5 range also offers the latest Wide Dynamic Range feature making this range ideal for surveillance in areas with strong variations in light, for instance close to large windows and entrances or where the sunlight creates both very bright zones and dark shadows.

On Screen Display

The in screen display makes simple work of setting up privacy masking and other camera settings like camera text and wide dynamic range settings.

Improved IR Technology

The Vega 5 IR model incorporates the latest improvements in IR technology offering up to 30 meters distance.

Masking

Up to 8 privacy masking zones can be set using the on screen display (OSD). Other features include motion detection and Defog settings in the camera.

Vari-Focal Lens

The new Vega 5 dome camera comes with an improved 2.8-12mm vari-focal lens ensuring that the camera's angle of view is optimized for the area to be monitored, giving contrast and clarity in the depth of field and optimising image resolution.

Technical Specification Vega 5 IR

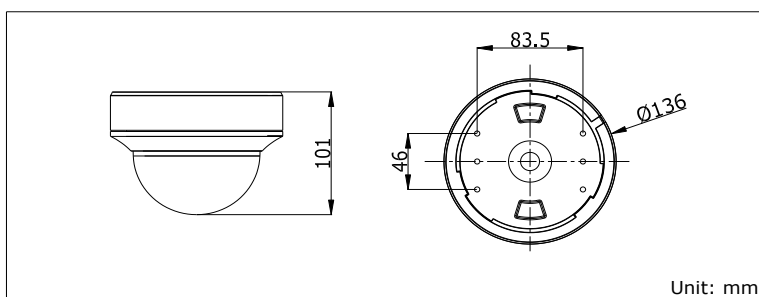
Image Sensor	1.27MP CMOS Image Sensor
Signal System	PAL/NTSC
Effective Pixels	1305(H)*977(V)
Min. illumination	0.001 Lux @(F1.2,AGC ON), 0 Lux with IR
Shutter Time	1/25(1/30)s to 1/50,000s
Lens	2.8 - 12 mm @ F1.4
FOV	Field of view: 92° - 29.3°
Lens Mount	φ14
Day & Night	ICR
Angle Adjustment	Pan: 0 - 340° , Tilt: 0 - 75° , Rotation: 0 - 355°
Synchronization	Internal synchronization
Video Frame Rate	720p@25fps/720p@30fps
HD Video Output	1 Analog HD output
CVBS Output	1Vp-p Composite Output(75Ω/BNC)
S/N Ratio	>62dB

Menu

Automatic Exposure	Globe AE/DWDR
AGC	Low/Middle/High/Off
Slow Shutter	Support
White Balance	Auto/Manual
D/N Mode	Color/BW/SMART IR
3D DNR	Low/Middle/High/Off
Motion Detection	Support, maximum 4 zones
Privacy Mask	On/Off, maximum 8 zones
Language	English, Japanese, CHN1, CHN2, Korean, German, French, Italian, Spanish, Polish, Russian, Portuguese, Dutch, Turkish, Hebrew and Arabic
Function	Digital Wide Dynamic Range, 3D Digital Noise Reduction, Sharpness, Brightness, Digital Zoom, Mirror, Reset

General

Operating Conditions	-20 ° C – 45 ° C (-4 ° F – 113 ° F), Humidity 90% or less (non-condensing)
Power Supply	12 VDC ± 15%; -A: 12 VDC ± 15% 24 VAC ± 15%,
Power Consumption	Max. 4W; -A: Max. 5W
IR Range	Up to 30m
Communication	Up the coax, (CVBS output), (HD output)
Dimensions	Φ136 × 101 mm (Φ 5.35" × 3.98")
Weight	600 G
Part Number	0017-06300



DISTRIBUTED BY



We reserve the right to introduce product modifications without notice

Follow us on



© 2017 Ernitec. All rights reserved
www.ernitec.com

Ernitec
Tempovej 41
2750 Ballerup
Denmark

RO1EN0717