

MicroView
by **e**rnitec

Network Bullet Camera

Quick Start Guide

MV CLOUD-201

About this Manual

This Manual is applicable to JCAM-201 Network Ernitec Cloud Camera.

The Manual includes instructions for using and managing the product. Pictures, charts, images and all other information here in after are for description and explanation only. The information contained in the Manual is subject to change, without notice, due to firmware updates or other reasons. Please find the latest version in the company website

Please use this user manual under the guidance of professionals.

Legal Disclaimer

REGARDING TO THE PRODUCT WITH INTERNET ACCESS, THE USE OF PRODUCT SHALL BE WHOLLY AT YOUR OWN RISKS. OUR COMPANY SHALL NOT TAKE ANY RESPONSIBILITES FOR ABNORMAL OPERATION, PRIVACY LEAKAGE OR OTHER DAMAGES RESULTING FROM CYBER ATTACK, HACKER ATTACK, VIRUS INSPECTION, OR OTHER INTERNET SECURITY RISKS; HOWEVER, OUR COMPANY WILL PROVIDE TIMELY TECHNICAL SUPPORT IF REQUIRED.

SURVEILLANCE LAWS VARY BY JURISDICTION. PLEASE CHECK ALL RELEVANT LAWS IN YOUR JURISDICTION BEFORE USING THIS PRODUCT IN ORDER TO ENSURE THAT YOUR USE CONFORMS THE APPLICABLE LAW. OUR COMPANY SHALL NOT BE LIABLE IN THE EVENT THAT THIS PRODUCT IS USED WITH ILLEGITIMATE PURPOSES. IN THE EVENT OF ANY CONFLICTS BETWEEN THIS MANUAL ANDTHE APPLICABLE LAW, THE LATER PREVAILS.

Regulatory Information

FCC Information

FCC compliance: This equipment has been tested and found to comply with the limits for a Class A digital device, pursuant to part 15 of the FCC Rules. These limits are designed to provide reasonable protection against harmful interference when the equipment is operated in a commercial environment. This equipment generates, uses, and can radiate radio frequency energy and, if not installed and used in accordance with the instruction manual, may cause harmful interference to radio communications. Operation of this equipment in a residential area is likely to cause harmful interference in which case the user will be required to correct the interference at his own expense.

FCC Conditions

This device complies with part 15 of the FCC Rules. Operation is subject to the following two conditions:

1. This device may not cause harmful interference.
2. This device must accept any interference received, including interference that may cause undesired operation.

EU Conformity Statement



This product and - if applicable - the supplied accessories too are marked with "CE" and comply therefore with the applicable harmonized European standards listed under the EMC Directive 2004/108/EC, the RoHS Directive 2011/65/EU.



2012/19/EU (WEEE directive): Products marked with this symbol cannot be disposed of as unsorted municipal waste in the European Union. For proper recycling, return this product to your local supplier upon the purchase of equivalent new equipment, or dispose of it at designated collection points. For more information see: www.recyclethis.info



2006/66/EC (battery directive): This product contains a battery that cannot be disposed of as unsorted municipal waste in the European Union. See the product documentation for specific battery information. The battery is marked with this symbol, which may include lettering to indicate cadmium (Cd), lead (Pb), or mercury (Hg). For proper recycling, return the battery to your supplier or to a designated collection point. For more information see: www.recyclethis.info

Industry Canada ICES-003 Compliance

This device meets the CAN ICES-3 (A)/NMB-3(A) standards requirements.



Safety Instruction

These instructions are intended to ensure that user can use the product correctly to avoid danger or property loss.

The precaution measure is divided into “Warnings” and “Cautions”

Warnings: Serious injury or death may occur if any of the warnings are neglected.

Cautions: Injury or equipment damage may occur if any of the cautions are neglected.

	
Warnings Follow these safeguards to prevent serious injury or death.	Cautions Follow these precautions to prevent potential injury or material damage.



Warnings

- In the use of the product, you must be in strict compliance with the electrical safety regulations of the nation and region. Please refer to technical specifications for detailed information.
- Input voltage should meet both the SELV (Safety Extra Low Voltage) and the Limited Power Source with 12 VDC according to the IEC60950-1 standard. Please refer to technical specifications for detailed information.
- Do not connect several devices to one power adapter as adapter overload may cause over-heating or a fire hazard.
- Please make sure that the plug is firmly connected to the power socket. When the product is mounted on wall or ceiling, the device shall be firmly fixed.
- If smoke, odor or noise rise from the device, turn off the power at once and unplug the power cable, and then please contact the service center.

- Proper configuration of all passwords and other security settings is the responsibility of the installer and/or end-user.



Cautions

- Make sure the power supply voltage is correct before using the camera.
- Do not drop the camera or subject it to physical shock.
- Do not touch sensor modules with fingers. If cleaning is necessary, use clean cloth with a bit of ethanol and wipe it gently. If the camera will not be used for an extended period, please replace the lens cap to protect the sensor from dirt.
- Do not aim the camera at the sun or extra bright places. Blooming or smearing may occur otherwise (which is not a malfunction), and affect the endurance of sensor at the same time.
- The sensor may be burned out by a laser beam, so when any laser equipment is in using, make sure that the surface of sensor will not be exposed to the laser beam.
- Do not place the camera in extremely hot, cold (the operating temperature shall be $-30^{\circ}\text{C} \sim +60^{\circ}\text{C}$, or $-40^{\circ}\text{C} \sim +60^{\circ}\text{C}$ if the camera model has an “H” in its suffix), dusty or damp locations, and do not expose it to high electromagnetic radiation.
- To avoid heat accumulation, good ventilation is required for operating environment.
- Keep the camera away from liquid while in use.

- While in delivery, the camera shall be packed in its original packing, or packing of the same texture.
- Regular part replacement: a few parts (e.g. electrolytic capacitor) of the equipment shall be replaced regularly according to their average enduring time. The average time varies because of differences between operating environment and using history, so regular checking is recommended for all the users. Please contact with your dealer for more details.
- Improper use or replacement of the battery may result in hazard of explosion. Replace with the same or equivalent type only. Dispose of used batteries according to the instructions provided by the battery manufacturer.
- If the product does not work properly, please contact your dealer or the nearest service center. Never attempt to disassemble the camera yourself. (We shall not assume any responsibility for problems caused by unauthorized repair or maintenance.)

Table of Contents

1 Appearance Description	8
1.1 Overview of Type I Bullet Camera	8
1.2 Overview of Type II Bullet Camera	10
1.2.1 Resetting the Camera	11
1.2.2 Setting the WPS Protocol.....	12
1.2.3 PoE Power Supply Configuration (Optional).....	13
2 Installation.....	14
2.1 Installation of the Bullet Camera	15
2.2 Installation of Network Cable Water-proof Jacket(Optional)	18
3 Setting the Network Camera over the LAN	21
3.1 Wiring	21
4 Register Camera Into Ernitec Cloud Services	22
4.1 Register Camera from dashboard for professionals	22
4.1.1 Register Camera	22
4.1.2 Unregister Camera	24
4.2 Register Camera from the web site Ernitec-Cloud	25
5 Download “Ernitec Cloud” App on IOS/Android	26
6 Wifi Network Setup	29
6.1 With WPS button	29
6.2 With “Ernitec Cloud” Mobile App Or Ernitec-Cloud website.....	29

1 Appearance Description

1.1 Overview of Type I Bullet Camera

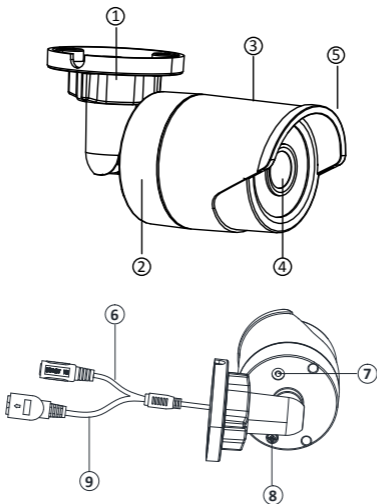


Figure 1-1 Type I Bullet Camera

Table 1-1 Description

No.	Description	No.	Description
1	Mounting Base	4	Lens
2	Back Box	5	Sun Shield
3	Front Box	6	Power Cable
7	Reset Button	8	GND Screw
9	10/100M Self-adaptive Ethernet Interface		



- Type I camera does not support the function of Wi-Fi or SD card.
- Press Reset button about 10s when the camera is power on or rebooting to restore the default settings, including the user name, password, IP address, port No., etc.

1.2 Overview of Type II Bullet Camera

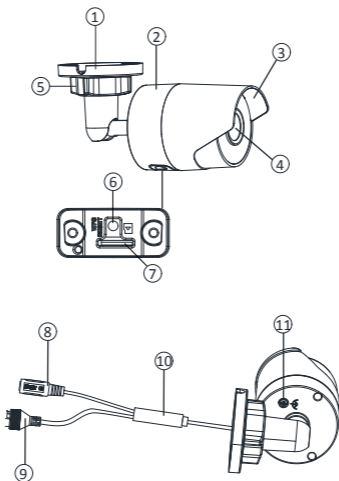


Figure 1-2 Type II Bullet Camera

Table 1-2 Description

No.	Description	No.	Description
1	Mounting Base	7	microSD Card Slot
2	Main Body	8	Power Supply Interface
No.	Description	No.	Description
3	Sun Shield	9	10/100M Self-adaptive Ethernet Interface
4	Lens	10	PoE Cable
5	Adjusting Nut	11	GND Screw
6	WPS/RESET Button		

1.2.1 Resetting the Camera

Move the RESET/WPS Cover, and press WPS/RESET button about 10s when the camera is power on or rebooting to restore the default settings, including the user name, password, IP address, port No., etc.

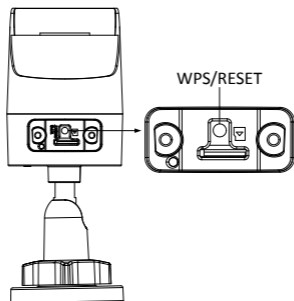


Figure 1-3 WPS/RESET Button

NOTE

WPS function and Reset function share the same button. The button works as a reset button only when you press it when the camera is powered on.

1.2.2 Setting the WPS Protocol

A wireless router with the WPS function is required to enable the WPS function of the camera. Refer the steps below.

Steps:

1. Enable the WPS function of your router. Refer to the operation guide of your router for detailed procedures.
2. Press the WPS/RESET button (about 2s) on the camera to join in the wireless network.

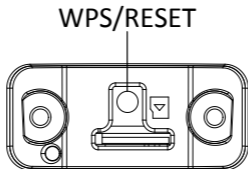


Figure 1-4 WPS/RESET Button



You can also press the WPS button on the camera first and then enable the WPS function on the router to establish the connection. But the WPS function of the router must be turned on within 120s right after pressing the WPS/RESET button on the camera.



Screw the microSD/RESET/WPS Cover back to the camera after all the settings.

1.2.3 PoE Power Supply Configuration (Optional)

This type of bullet camera supports PoE power supply. You can power the camera by connecting both DC 12V interface and the Ethernet interface. Or you can connect the Ethernet interface only.

2 Installation

Before you start:

- Make sure the device in the package is in good condition and all the assembly parts are included.
- The standard power supply is 12V DC, please make sure your power supply matches with your camera.
- Make sure all the related equipment is power-off during the installation.
- Check the specification of the products for the installation environment.
- Make sure that the wall is strong enough to withstand four times the weight of the camera and the bracket.

For the camera that supports IR, you are required to pay attention to the following precautions to prevent IR reflection:

- Dust or grease on the dome cover will cause IR reflection. Please do not remove the dome cover film until the installation is finished. If there is dust or grease on the dome cover, clean the dome cover with clean soft cloth and isopropyl alcohol.
- Make sure that there is no reflective surface too close to the camera lens. The IR light from the camera may reflect back into the lens causing reflection.
- The foam ring around the lens must be seated flush against the inner surface of the bubble to isolate the lens from the IR LEDs. Fasten the dome cover to camera body so that the foam ring and the dome cover are attached seamlessly.

2.1 Installation of the Bullet Camera



Both wall mounting and ceiling mounting are suitable for the bullet camera. Wall mounting will be taken as an example in this section. You can take steps of wall mounting as a reference if ceiling mounting is adopted.

Steps:

1. Drill the screw holes in the wall according to the drill template.

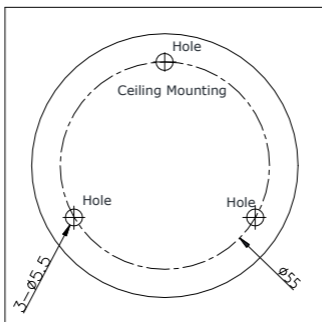


Figure 2-1 Drill Template

2. Route the corresponding cables.
3. Secure the camera to the wall with the supplied Screws.

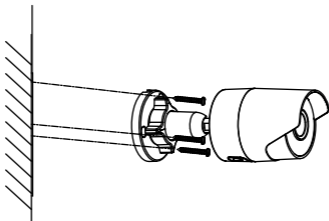


Figure 2-2 Secure the Camera to the Ceiling

4. Connect the corresponding power/Video Output cables.
5. Adjust the surveillance angle.

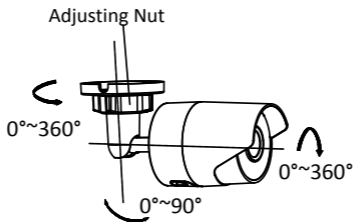


Figure 2-3 3-axis Adjustment

- 1). Loosen the adjusting nut.
- 2). Adjust the pan direction [0° to 360°].
- 3). Adjust the tilt direction [0° to 90°].

- 4). Rotate the camera [0° to 360°] to adjust the lens to the surveillance angle.
- 5). Tighten the adjusting nut to complete the installation.

2.2 Installation of Network Cable Water-proof Jacket(Optional)

Purpose:

If the camera is installed outdoor, you can adapt the water-proof accessory for the network cable after the camera is secured on the installation surface.

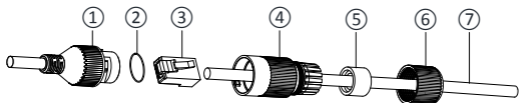


Figure 2-4 Water-proof Accessory Components

Table 2-1 Components

No.	Components
1	Camera's Network Interface Socket
2	O-Type Gasket
3	Network Plug
4	Waterproof End cap
5	Waterproof Rubber Gasket
6	Lock Nut
7	Network Cable from Router/Switch

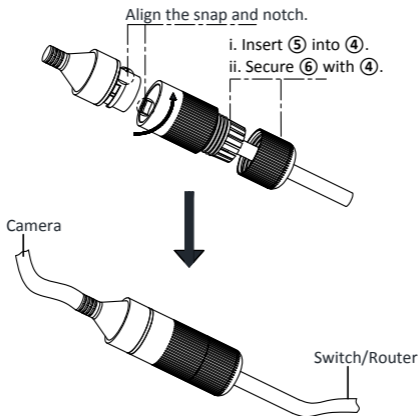


Figure 2-5 Water-proof Accessory Installation

Steps:

1. Feed the plug less network cable ⑦ through the lock nut ⑥, waterproof rubber gasket ⑤ (rubber gasket inset ridge must face waterproof end cap), and the water-proof end cap ④ in order.
2. Crimp an RJ-45 network plug onto the end of the cable, taking care to insert the twisted pairs of wires in correct order.
3. Place the O-type gasket ② onto the end of the camera's network interface socket ①.

4. Insert the network plug ③ into the camera's network interface socket ①.
5. Insert the water-proof rubber gasket ⑤ into the waterproof end cap ④, and secure lock nut ⑥ with the water-proof end cap ④.
6. Align the snap on the water-proof end cap ④ with the notch on the camera's network interface socket ①, and then secure the water-proof end cap ④ to the camera's network interface socket ① to finish installation.

3 Setting the Network Camera over the LAN

Note:

You shall acknowledge that the use of the product with Internet access might be under network security risks. For avoidance of any network attacks and information leakage, please strengthen your own protection. If the product does not work properly, please contact with your dealer or the nearest service center.

3.1 Wiring

Please connect the camera to the Internet Box according to the following figure



Figure 3-1 Connecting camera to internet box

4 Register Camera Into Ernitec Cloud Services

4.1 Register Camera from dashboard for professionals

4.1.1 Register Camera

Steps:

1. Find the MAC Address on the sticker of the camera box.



Figure 4-1: Mac Address on the sticker

2. Power On the camera and connect it to the internet box.
3. Go to the Customers page of Dashboard. Click on “Add Camera” button of subscription’s customer.



Figure 4-2: Add Camera Button

- After the camera is connected to internet, you have 30 minutes from its start time in order to enter the MAC address, camera name and choose the Time Zone then click "Add" button.

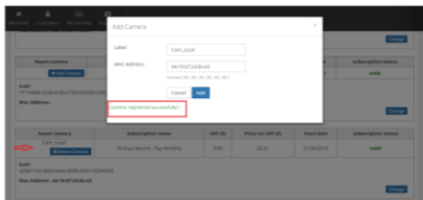


Figure 4-3: Register camera from dashboard

- Once the camera has been registered into the Ernitec Cloud Service, you can view the live video of the camera from the account of the Web Site Ernitec-Cloud.

4.1.2 Unregister Camera

Steps:

1. In order to disable Ernitec Cloud services, please click on “Delete Camera” button of the Customers page of Dashboard.



Figure 4-4: Delete Camera Button

2. If you are sure to delete your camera, click on “Yes” button.

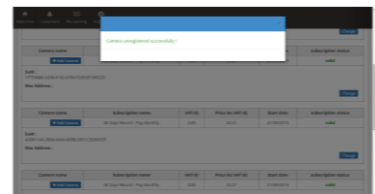


Figure 4-5: Unregister camera

4.2 Register Camera with scan of the QR Code

You can also register your camera with scanning the QR code from “Ernitec Cloud” App on IOS/Android. The application “Ernitec Cloud” can be downloaded from App Store or from Google Play (please refer to chapter 5)

5 Download “Ernitec Cloud” App on IOS/Android

To use the mobile application “Ernitec Cloud”, you may download it in two ways:

- Download “Ernitec Cloud” from the Google Play (Android) or from the App Store (IOS).

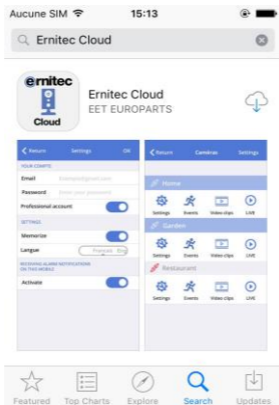


Figure 5-2: IOS



Figure 5-1: Android

- By using your smartphone or your iPhone equipped with an application to read QR codes you can easily download “Ernitec Cloud” App. Once you scan the QR Code existing on the sticker of camera box, the link of download application appears on the screen of your smartphone or your iPhone.



Figure 5-3: QR Code

6 Wifi Network Setup

You can connect the camera with network cable or with Wi-Fi.

To connect camera with Wi-Fi, there are two methods:

6.1 With WPS button

You can use this method if your internet Box is equipped with the WPS button.

Steps:

1. Power on the camera.
2. Press the WPS button on the Internet Box.
3. Press the WPS button on the camera.

6.2 With “Ernitec” Mobile App Or

<https://www.ernitec-cloud.com> website

Steps:

1. Connect the camera to the internet box, by using the network cable provided in the camera box.
2. Register the camera (Refer to the chapter 4).
3. From the website Ernitec-Cloud, or with the mobile application, go to the camera setting, the Wi-Fi setting.
4. Select the Wi-Fi network from the list.
5. Enter the Wi-Fi password and apply.
6. If the Wi-Fi is connected, you will get a success message, otherwise come back to the step 4.

